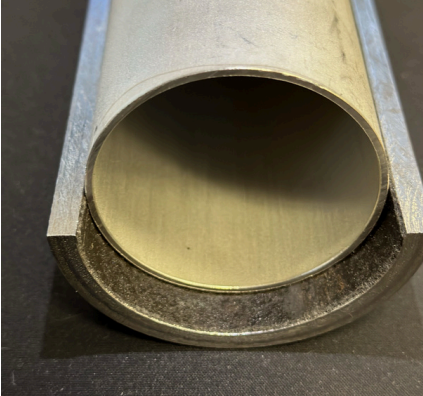
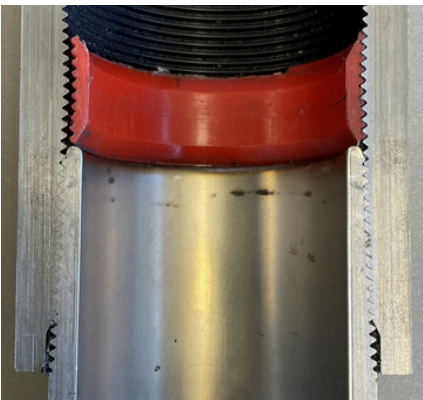


ZLoy316 is made of bimetallic construction, featuring a carbon steel base and stainless steel inner lining. This gives it improved mechanical strength and durability, as well as excellent chemical and corrosion protection.



Features

- Stainless Steel Liner (SS316L) is a low-carbon nickel-chromium-molybdenum based steel alloy that combines excellent strength, high ductility, and good thermal properties.
- The low thermal expansion rate can withstand temperatures up to 350°C.
- The hydraulic composite method ensures uniform compression and strong bonding between the stainless steel liner and outer pipes.
- The threads and coupling are finished with a Spray Metal coating (Nitrided) for a complete corrosion barrier.



Benefits

- SS316L provides exceptional resistance to corrosive chemicals such as sulfuric, hydrochloric, acetic and formic acids; as well as against acid sulfates and alkaline chlorides with minimal abrasion and wear.
- Excellent mechanical properties including robust impact resistance, elevated tensile strength and increased elongation.
- Stainless steel liners enhance corrosion and pitting resistance to localized corrosive attack by chlorides, H₂S and CO₂ acid gases.
- Liner is finished to the apex of the Pin-End and then laser welded to provide a complete seal and high-pressure resistance.



Applications

- Superior choice for high corrosion and high temperature downhole tubing applications.
- Chemical and petrochemical processes, harsh water compositions and extreme environmental conditions that cause stress corrosion.
- SAGD and Geothermal applications.
- Ideal for applications that risk potential exposure to chlorides.
- Reduction in the amount of workovers and tubing replacements as it can withstand welding and corrosive chemicals.

Stainless steel; line your walls with ZLoy316

ZEROCOR Tubulars | 1950, 639 5 Ave SW | Calgary, AB | (403) 234-7473

ZEROCOR.com

PRODUCT SPECIFICATIONS

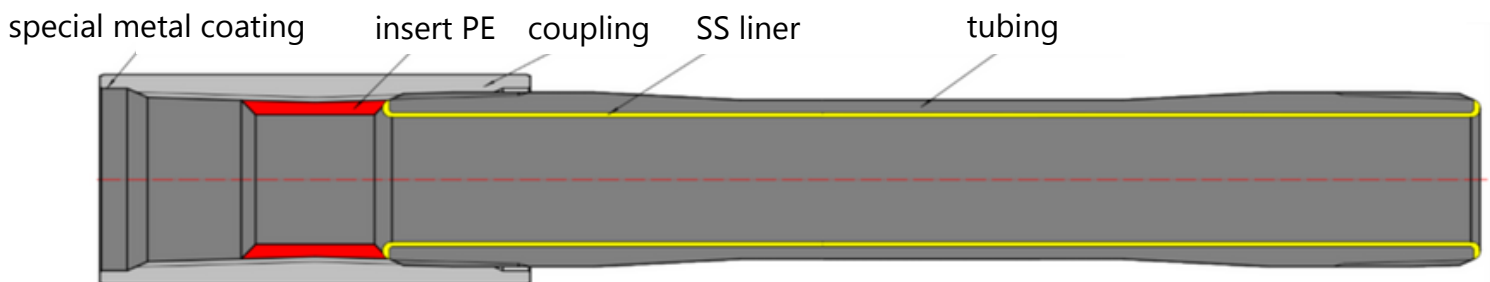
API Standard Stainless Steel Lined Tubing:

Tubing OD (mm)	Wall Thickness (mm)	Weight (kg/m)	Coupling OD (mm)	Stainless Steel Thickness (mm)	Tubing ID (mm)	SS Liner ID (mm)
48.26	3.68	4.32	63.5	1	38.9	36.52
60.32	4.83	6.99	77.8	1	48.66	46.28
73.02	5.51	9.67	93.17	1	60.0	57.62
88.9	6.45	13.84	114.3	1.5	73.0	69.82

Non-API Custom Stainless Steel Lined Tubing:

Tubing OD (mm)	Wall Thickness (mm)	Weight (kg/m)	Tubing ID (mm)	Coupling OD (mm)	Hydrostatic Pressure (MPa)	Pipe Body Yield Strength (kN)	Joint Connection Strength (kN)	SS Liner ID (mm)	API Spec Correspondence
52.4	3.96	4.84	44.48	63.5	45.50	228.0	165.0	38.52	1.9 EU
77.5	5.25	9.85	67.0	93.17	60.00	657.8	490.5	59.62	2-7/8 EU
89.0	5.0	10.45	79.0	107.95	49.50	728.0	513.0	72.82	3-1/2 EU
92.0	6.5	13.78	79.0	114.3	62.40	661.0	641.0	72.82	3-1/2 EU

January 2025



Stainless steel; line your walls with ZLoy316

ZEROCOR Tubulars | 1950, 639 5 Ave SW | Calgary, AB | (403) 234-7473

ZEROCOR.com