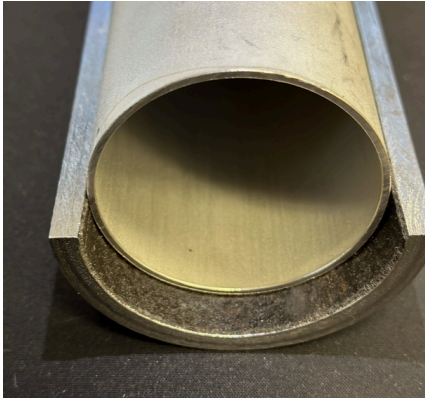
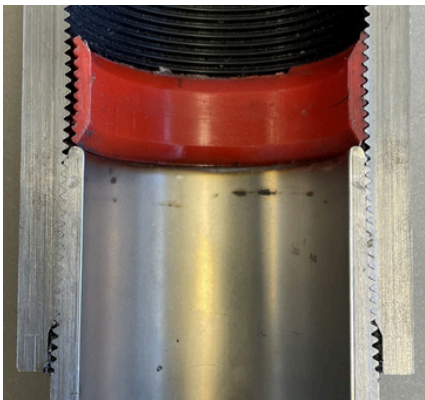


ZLoy316 is made of bimetallic construction, featuring a carbon steel base and stainless steel inner lining. This gives it improved mechanical strength and durability, as well as excellent chemical and corrosion protection.



Features

- Stainless Steel Liner (SS316L) is a low-carbon nickel-chromium-molybdenum based steel alloy that combines excellent strength, high ductility, and good thermal properties.
- The low thermal expansion rate can withstand temperatures up to 350°C.
- The hydraulic composite method ensures uniform compression and strong bonding between the stainless steel liner and outer pipes.
- The threads and coupling are finished with a Spray Metal coating (Nitrided) for a complete corrosion barrier.



Benefits

- SS316L provides exceptional resistance to corrosive chemicals such as sulfuric, hydrochloric, acetic and formic acids; as well as against acid sulfates and alkaline chlorides with minimal abrasion and wear.
- Excellent mechanical properties including robust impact resistance, elevated tensile strength and increased elongation.
- Stainless steel liners enhance corrosion and pitting resistance to localized corrosive attack by chlorides, H₂S and CO₂ acid gases.
- Liner is finished to the apex of the Pin-End and then laser welded to provide a complete seal and high-pressure resistance.



Applications

- Superior choice for high corrosion and high temperature downhole tubing applications.
- Chemical and petrochemical processes, harsh water compositions and extreme environmental conditions that cause stress corrosion.
- SAGD and Geothermal applications.
- Ideal for applications that risk potential exposure to chlorides.
- Reduction in the amount of workovers and tubing replacements as it can withstand welding and corrosive chemicals.

Stainless steel; line your walls with ZLoy316

ZEROCOR Tubulars | 1950, 639 5 Ave SW | Calgary, AB | (403) 234-7473

ZEROCOR.com